

Marpac Offshore High Back Yacht Chair



- Comfortable high back.
- Stable double leg construction with cross bar.
- Durable 1" corrosion resistant aluminum tubing.
- Easy to store-only 4" wide when folded.
- Water and UV resistant materials.
- Classic look with the varnished hardwood arms.

Order No.	Description	Price
7-0006	High Back Yacht Chair	\$89.98 E

Folding Deck Chair with Sailfish Design



- Injection molded plastic frame will not rot or soften.
- High density foam cushions are resilient and firm for maximum comfort.
- They easily fold for storing.
- The heavy duty 26 oz. marine grade vinyl upholstery is mildew resistant and UV treated to withstand fading.
- All hardware in corrosion resistant stainless steel.
- Double leg frames are constructed of sturdy, thick-wall, bright-dipped anodized aluminum.
- Seat height: 30", seat width: 26", depth: 24", seat depth: 15-3/4".
- Positive locking 1 anodized aluminum tubular frame.
- With stylish, sailfish embroidered design.

Order No.	Mfg. No. / Description	Price
262686	(WD119-710)	\$282.98 F

Mariner Pilot Seats with Shock Absorber



- Base mounted pilot seat.
- Heavy duty shock absorber.
- Knee-action mechanical suspension.
- 3" seat height adjustment.
- 6" fore and aft double locking slide adjustment.
- Adjustable backrest.
- Fold-up armrests.
- Contoured lumbar support.
- Convenient side "chart pockets".
- Width 24".

Order No.	Mfg. No. / Description	Price
335251	(158106VA06) Brown	\$1,080.98 H
335252	(158106VA01) Black	\$1,080.98 C
335263	(158106VA02) Blue	\$1,080.98 C

Marpac Folding Deck Chair



- Aluminum.
- White.
- Overall width: 26-1/2" W.
- Seat dimensions: 19" W x 15" D.
- Depth 26".
- Stored width: 11".
- Cushion 3".

Order No.	Description	Price
7-0003	Folding Deck Chair	\$219.98 F

Taylor Made White Rubber Chair Tips



- No-marking rubber chair tips are great for use on deck chairs, boarding ladders, boat hooks, etc.
- Fits 1" tubing.
- Sold in packages of 4 tips.

Order No.	Mfg. No. / Description	Price
361042	(96025)	\$11.98 G

Deluxe Helm Chairs with Padded Arm Rests



- Super plush helm seat is constructed with injection molded plastic frame.
- 6" thick high compression foam seat padding.
- UV and mildew treated marine grade vinyl.
- Heavy duty aluminum bar back brackets flex for comfort.
- Aluminum arm rest brackets.
- Mounts on any BIA Standard 4 bolt pedestal or 5-1/4" hole pattern mounting system.
- Height 20-1/4", overall width 24-1/2", cushion width 19-3/4", width inside arms 17", overall depth 20-1/2", seat depth 17".

Order No.	Mfg. No. / Description	Price
263311	(WD431AR-710) White	\$305.98 F
263323	(WD431AR-717) Gray	\$289.98 F

Heavy Duty Pilot Chair



- Meets FMVSS 207 and 302.
- Infinite back angle thru 90°.
- 14 gauge steel tubing.
- Black powder coat finish.
- 6 fore/aft adjustor.
- No sag spring construction.
- 50 oz. heavy duty vinyl.

Order No.	Mfg. No. / Description	Price
335275	(WM1113-630)	\$480.98 LQ

- Fun & Flotation
- Anchor & Dock
- Safety
- Electronics
- Trolling Motors
- Lighting
- Electrical
- Topside Acc.
- Cockpit & Deck
- Instruments
- Steering, Controls
- Perform.
- Fuel System
- Engine & Parts
- Engine Care
- Propellers
- Seating & Pedestals
- Tops & Covers
- Pumps
- Cleaning & Care
- Paint & Paint Acc.
- Hardware, Fasteners
- Trailering
- Misc.
- Comm.

For ease of ordering and manufactured by industry leading companies. These products meet the requirements for "A" Drivers.

Pilot Chair

- Standard pilot chair features rotational molded thick wall plastic frame with T-nut inserts for mounting.
- UV and mildew treated marine grade vinyl with embroidered logo.
- Snap on and off seat cushions have mesh underlay to expel moisture.
- High compression foam padding.
- Comes pre-mounted with injection molded plastic mounting plate.
- Mounts to any 4 bolt BIA Standard pedestal or 5-1/4" hole pattern mounting system.
- Seat dims.: Height 18-1/4", width 16", depth 19-1/2", seat depth 16-1/2".



Order No. **484820** Mfg. No. / Description (WD013-3-710) Price **\$135.98** F

Heavy Duty Pilot Chair

- Deluxe pilot helm chair features rotational molded thick wall plastic frame with T-nut inserts for mounting.
- UV and mildew treated marine grade vinyl with embroidered logo.
- Snap on and off seat cushions have mesh underlay to expel moisture.
- High compression foam padding.
- Molded arm rests.
- Comes pre-mounted with injection molded plastic mounting plate.
- Mounts to any 4 bolt BIA Standard pedestal or 5-1/4" hole pattern mounting system.
- Seat dims.: Height 18-1/4", width 17-3/4", depth 22-1/4", seat depth 17".



Order No. **484840** Mfg. No. / Description (WD015-3-710) Price **\$143.98** F

Ladder Back Pilot Chair

- Ladder back pilot chair features rotational molded thick wall plastic frame pre-mounted with injection molded plastic mounting plate with T-nut inserts.
- UV and mildew treated marine grade vinyl.
- Snap on and off seat cushions have mesh underlay to expel moisture.
- High compression foam padding.
- Molded arm rests.
- Mounts to any 4 bolt BIA Standard pedestal.
- Seat dims.: Height 32", width 17-1/2", depth 23", seat depth 17-1/2".



Order No. **484900** Mfg. No. / Description (WD1095-3-710) Price **\$238.98** F

Extra Wide Captains Chair

- Captains chair features rotational molded thick wall plastic frame with pre-mounted injection molded plastic mounting plate with T-nut inserts.
- UV and mildew treated marine grade vinyl.
- Snap on and off seat cushions have mesh underlay to expel moisture.
- High compression foam padding.
- Molded arm rests with padded cushions.
- Mounts to any 4 bolt BIA Standard pedestal.
- Seat dims.: Height 21", width 17-1/2", depth 24", seat depth 15".



Order No. **484890** Mfg. No. / Description (WD1007-3-710) Price **\$197.98** F

Garelick EEz-In Premium Roto Molded Seat

- Extra wide seating designed for easy maintenance.
- Rotationally molded of tough UV resistant white polyethylene.
- Marine grade white quilted vinyl.
- Snap-on removable cushions.
- Tee-nut bottom inserts accept anodized support rails that make it compatible with most pedestals, swivel and fore and aft seat slides.
- Width 22-1/2", depth 18", height 19".



Order No. **391603** Mfg. No. / Description (48050:02) Price **\$269.98** F

Flip-Up Bucket Seat

- Premium bucket seat features flip-up bolster seat for added visibility while docking or cruising.
- Rotational molded thick wall plastic frame comes pre-mounted with plastic injection molded mounting plate with T-nut inserts.
- High compression foam padding.
- Soft touch UV and mildew treated marine grade vinyl.
- Very detailed upholstery design is top of the line quality.
- Mounts to any 4 bolt BIA Standard pedestal.
- Seat dimensions: Height 22", width 17", depth 27", seat depth 22".



Order No. **484853** Mfg. No. / Description (WD1156-784) Cuddy Brite White Price **\$544.98** F

Tempress Captain's Series Helm Seats - High-Back



- Rotationally molded, incorporates the patented NaviStyle Style Panel system and ensures superior comfort, unequalled quality.
- Constructed of materials designed to withstand the rigors of the marine environment.
- Built-in lumbar support and a rolled front edge.
- Seat dimensions: 26" H x 23-1/2" W x 27-1/2" D.

Order No. **262698** Mfg. No. / Description (57010) White Price **\$260.98** F
262701 (57017) Charcoal/Gray Cushion with Black Shell **\$260.98** F

- Fun & Flotation
- Anchor & Dock
- Safety
- Electronics
- Trolling Motors
- Lighting
- Electrical
- Topside Acc.
- Cockpit & Deck
- Instruments
- Steering, Controls
- Perform.
- Fuel System
- Engine & Parts
- Engine Care
- Propellers
- Seating & Pedestals
- Tops & Covers
- Pumps
- Cleaning & Care
- Paint & Paint Acc.
- Hardware, Fasteners
- Trailer
- Misc.
- Comm.

Pilot Chair with 15" Pedestal and Slide



- Standard pilot chair (WD013) features rotational molded thick wall plastic frame with T-nut inserts for mounting.
- Snap on and off UV and mildew treated marine grade vinyl cushions with mesh underlay to expel moisture.
- Embroidered logo.
- 15" fixed height pedestal (WP23-15S) features 9" polished aluminum base plate, 2-7/8" thick wall aluminum post.
- Seat mount swivels 360° with locking mechanism.
- Comes with injection molded mounting plate pre-mounted to seat frame.
- Seat dims.: Height 18-1/4", width 16", depth 19-1/2", seat depth 16-1/2".

Order No. Mfg. No. / Description Price
263500 Seat Package #1 **\$239.98** F

Pilot Chair with Adjustable Pedestal and Slide



- Standard pilot chair (WD013) features rotational molded thick wall plastic frame with T-nut inserts for mounting.
- Snap on and off UV and mildew treated marine grade vinyl cushions with mesh underlay to expel moisture.
- Embroidered logo.
- 12" to 18" adjustable pedestal (WP21-374) with 5" travel fore and aft slide.
- Features 9" diameter polished aluminum base plate, 2-7/8" diameter thick wall post.
- Seat mount swivels 360° with locking mechanism.
- Comes with injection molded plastic mounting plate pre-mounted to seat frame.
- Seat dims.: Height 18-1/4", width 16", depth 19-1/2", seat depth 16-1/2".

Order No. Mfg. No. / Description Price
263502 Seat Package #2 **\$292.98** F

Pilot Chair with 15" Pedestal



- Deluxe pilot helm chair (WD015) features rotational molded thick wall plastic frame with T-nut inserts for mounting.
- Snap on and off UV and mildew treated marine grade vinyl cushions with mesh underlay to expel moisture.
- Embroidered logo.
- Molded arm rests.
- 15" fixed height pedestal (WP23-15S) features 9" polished aluminum base plate, 2-7/8" thick wall aluminum post.
- Seat mount swivels 360° with locking mechanism.
- Comes with injection molded mounting plate pre-mounted to seat frame.
- Seat dims.: Height 18-1/4", width 17-3/4", depth 22-1/2", seat depth 17".

Order No. Mfg. No. / Description Price
263503 Seat Package #3 **\$470.98** F

Pilot Chair with 15" Pedestal and Slide



- Deluxe pilot helm chair (WD015) features rotational molded thick wall plastic frame with T-nut inserts for mounting.
- Snap on and off UV and mildew treated marine grade vinyl cushions with mesh underlay to expel moisture.
- Embroidered logo.
- Molded arm rests.
- 15" fixed height pedestal (WP23-15-374) with 5" travel fore and aft slide.
- Features 9" diameter polished aluminum base plate, 2-7/8" diameter thick wall aluminum post.
- Seat mount swivels 360° with locking mechanism.
- Comes with injection molded plastic mounting plate pre-mounted to seat frame.
- Seat dims.: Height 18-1/4", width 17-3/4", depth 22-1/2", seat depth 17".

Order No. Mfg. No. / Description Price
263504 Seat Package #4 **\$264.98** F

Captains Chair Adjustable Pedestal and Slide



- Captains chair (WD1007) features rotational molded thick wall plastic frame with pre-mounted injection molded plastic mounting plate with T-nut inserts.
- Snap on and off UV and mildew treated marine grade vinyl cushions with mesh underlay to expel moisture.
- Molded arm rests with padded cushions.
- 12" to 18" adjustable pedestal (WP21-374) with 5" travel fore and aft slide.
- Features 9" diameter polished aluminum base plate, 2-7/8" diameter thick wall post.
- Seat mount swivels 360° with locking mechanism.
- Comes with injection molded plastic mounting plate pre-mounted to seat frame.
- Seat dims.: Height 21", width 17-1/2", depth 24", seat depth 15".

Order No. Mfg. No. / Description Price
263505 Seat Package #5 **\$367.98** F

Captains Chair with 15" Pedestal and Slide



- Captains chair (WD1007) features rotational molded thick wall plastic frame with pre-mounted injection molded plastic mounting plate with T-nut inserts.
- Snap on and off UV and mildew treated marine grade vinyl cushions with mesh underlay to expel moisture.
- Molded arm rests with padded cushions.
- 15" fixed height pedestal (WP23-15-374) with 5" travel fore and aft slide.
- Features 9" diameter polished aluminum base plate, 2-7/8" diameter thick wall post.
- Seat mount swivels 360° with locking mechanism.
- Comes with injection molded plastic mounting plate pre-mounted to seat frame.
- Seat dims.: Height 21", width 17-1/2", depth 24", seat depth 15".

Order No. Mfg. No. / Description Price
263506 Seat Package #6 **\$329.98** F

Note: Seat Packages: Seat height refers to the distance from the bottom (mounting plate) of the seat to the top of the backrest. Does not include pedestal height.

- Fun & Flotation
- Anchor & Dock
- Safety
- Electronics
- Trolling Motors
- Lighting
- Electrical
- Topside Acc.
- Cockpit & Deck
- Instruments
- Steering, Controls
- Perform.
- Fuel System
- Engine & Parts
- Engine Care
- Propellers
- Seating & Pedestals**
- Tops & Covers
- Pumps
- Cleaning & Care
- Paint & Paint Acc.
- Hardware, Fasteners
- Trailering
- Misc.
- Comm.

Captains Chair with 15" Pedestal



- Captains chair (WD1007) features rotational molded thick wall plastic frame with pre-mounted injection molded plastic mounting plate with T-nut inserts.
- Snap on and off UV and mildew treated marine grade vinyl cushions with mesh underlay to expel moisture.
- Molded arm rests with padded cushions.
- 15" fixed height pedestal (WP23-15S) features 9" polished aluminum base plate, 2-7/8" thick wall aluminum post.
- Seat mount swivels 360° with locking mechanism.
- Comes with injection molded mounting plate pre-mounted to seat frame.
- Seat dims.: Height 21", width 17-1/2", depth 24", seat depth 15".

Order No.	Mfg. No. / Description	Price
263507	Seat Package #7	\$366.98 F

Ladder Back Pilot Chair with Adjustable Pedestal and Slide



- Ladder back pilot chair (WD1095) features rotational molded thick wall plastic frame pre-mounted with injection molded plastic mounting plate with T-nut inserts.
- Snap on and off UV and mildew treated marine grade vinyl cushions with mesh underlay to expel moisture.
- Molded arm rests.
- 12" to 18" adjustable pedestal (WP21-374) with 5" travel fore and aft slide.
- Features 9" diameter polished aluminum base plate, 2-7/8" diameter thick wall post.
- Seat mount swivels 360° with locking mechanism.
- Comes with injection molded plastic mounting plate pre-mounted to seat frame.
- Seat dims.: Height 32", width 17-1/2", depth 23", seat depth 17-1/2".

Order No.	Mfg. No. / Description	Price
263508	Seat Package #8	\$408.98 F

Ladder Back Pilot Chair with 15" Pedestal and Slide



- Ladder back pilot chair (WD1095) features rotational molded thick wall plastic frame pre-mounted with injection molded plastic mounting plate with T-nut inserts.
- Snap on and off UV and mildew treated marine grade vinyl cushions with mesh underlay to expel moisture.
- Molded arm rests.
- 15" fixed height pedestal (WP23-15-374) with 5" travel fore and aft slide.
- Features 9" diameter polished aluminum base plate, 2-7/8" diameter thick wall post.
- Seat mount swivels 360° with locking mechanism.
- Comes with injection molded plastic mounting plate pre-mounted to seat frame.
- Seat dims.: Height 32", width 17-1/2", depth 23", seat depth 17-1/2".

Order No.	Mfg. No. / Description	Price
263509	Seat Package #9	\$370.98 F

Bucket Seat with Adjustable Pedestal and Slide



- Premium bucket seat (WD1156) features flip-up bolster seat for added visibility while docking or cruising.
- Rotational molded thick wall plastic frame comes pre-mounted with plastic injection molded mounting plate with T-nut inserts.
- High compression foam padding.
- Soft touch UV and mildew treated marine grade vinyl.
- 12" to 18" adjustable pedestal (WP21-374) with 5" travel fore and aft slide.
- Features 9" diameter polished aluminum base plate, 2-7/8" diameter thick wall post.
- Seat mount swivels 360° with locking mechanism.
- Comes with injection molded plastic mounting plate pre-mounted to seat frame.
- Seat dims.: Height 22", width 17", depth 27", seat depth 22".

Order No.	Mfg. No. / Description	Price
263510	Seat Package #10	\$687.98 F

Note: Seat Packages: Seat height refers to the distance from the bottom (mounting plate) of the seat to the top of the backrest. Does not include pedestal height.

Garelick EEz-In Roto Molded Seat Package



- Complete package includes: Seat, cushions, locking swivel and 15" pedestal.
- Compact seat is made of UV resistant white polyethylene with removable snap-on quilted white vinyl cushions.
- Includes 360° locking swivel with delrin bushing cup and 15" anodized aluminum 2-7/8" diameter ribbed pedestal.
- Stainless steel seat to pedestal mounting hardware.
- Seat dimensions: 17.5" D x 15.63" W x 16.24" H.

Order No.	Mfg. No. / Description	Price
391608	(48408:02)	\$212.98 G

Garelick EEz-In High Back Roto Molded Seat with Integral Arm Rests Package



- Seat is made of UV resistant white polyethylene with removable snap on white quilted vinyl cushions.
- Includes 360° locking swivel mount top with Delrin bushing cup and 15" height anodized aluminum 2-7/8" diameter ribbed pedestal.
- Stainless steel seat to pedestal mounting hardware.
- Seat dimensions: 21.45" D x 20.5" W x 19.32" H.
- Individually boxed.

Order No.	Mfg. No. / Description	Price
691655	(48419:02)	\$486.98 G

- Fun & Flotation
- Anchor & Dock
- Safety
- Electronics
- Trolling Motors
- Lighting
- Electrical
- Topside Acc.
- Cockpit & Deck
- Instruments
- Steering, Controls
- Perform.
- Fuel System
- Engine & Parts
- Engine Care
- Propellers
- Seating & Pedestals
- Tops & Covers
- Pumps
- Cleaning & Care
- Paint & Paint Acc.
- Hardware, Fasteners
- Trailer
- Misc.
- Comm.

Springfield Marine Ladder Back Chair



- Ladderback chair features: UV stabilized polypropylene back with grab handle.
- Plastic armrest on anodized and polished aluminum arm brackets with snap on cushions.
- Inside dimension: 13" H x 17.75" W x 18.75" D.
- Outside dimensions: 21.094" H x 22.25" W x 28.072" D.
- Mounting pattern: 5" x 12".

Order No. Mfg. No. / Description Price
550015 (1061301) Off White **\$418.98** LQ

Springfield Marine Bluewater Chair Package



- Seat is rotational molded in UV stable white polyethylene with molded in arm rests.
- Seat uses T-nuts.
- This is Chair #13 - Please note that on the bottom of the chair there is a rectangular area that says "Chair No. 13".
- Bluewater seat cushions made out of marine grade vinyl.
- Plush foam padding heat seal channel designed textile mesh underliners to permit cushions to dry.
- Pedestal set Mainstay 09 anodized adjustable.
- Pedestal post diameter: 2-3/8". Post finish: Satin anodized.
- Adjustment height: 14.5" to 19.5".
- Base diameter: 9". Base finish: Anodized.
- Trac-Lock III 2-3/8" Air Ride locking seat mount.
- Slide seat mount swivel finish: Powder coated.
- Dimensions: 19.5" H x 18" W x 20" D.

Order No. Mfg. No. / Description Price
550305 (1001204-L) Includes: Chair, Cushions, Mount, Pedestal **\$411.98** LQ

Carver Seat Cover



- Specially designed to protect reversible seats on center console style boats.
- Includes 1/4" strong and durable shock cord encased in the hem & heavy duty attached adjustable strap system for a more customized fit.
- Performance Poly-Guard, our toughest marine grade polyester fabric.
- Dimensions: 40" H x 35" W x 19" D.

Order No. Mfg. No. / Description Price
820790 (84012P) Gray **\$71.98** Q

Stainless Steel Swingback Seat



- Space below seat is designed to fit a cooler, saving valuable space.
- Fits 72 and 94 qt. coolers.
- Three different seating positions are available by adjusting the back and securing with stainless steel locking pins.
- Cooler sold separately.
- Seat height 38", width 39", depth 22".

Order No. Mfg. No. / Description Price
263448 (WD8155P-784) White **\$740.98** F

Springfield Marine Commodore Pilot Chair Package



- Seafarer Seat #4 Schulman rotational molded seat from LLDPE plastic with UV inhibitors to weather the outdoors for years of carefree use.
- Mounts to most seat swivels and slides.
- This is Chair #4 - Please note that on the bottom of the chair there is a rectangular area that says "Chair No. 4".
- Seat cushions: These seat cushions are made out of marine grade vinyl.
- Plush foam padding heat seal channel designed textile mesh underliners to permit cushions to dry.
- Pedestal set: Anodized 15" pedestal (measured from deck to top of seat mount).
- Pedestal post diameter: 2-3/8".
- Post finish: Satin anodized.
- Base diameter: 9".
- Base finish: Anodized.
- Kingpin Hi-Rise seat mount swivel.
- Swivel finish: E-coated, rotates 360°.
- Color: White.
- Dimensions: 17" H x 16" W x 17" D.

Order No. Mfg. No. / Description Price
550300 (1000605-5) Includes: Chair, Cushions, Mount, Pedestal **\$266.98** LQ

Deluxe Cooler/Livewell Swingback Seats



- Durable seats feature brite dipped anodized aluminum swing-arms, plush ribbed marine grade vinyl upholstery, rounded interior corners to prevent bait from getting trapped, hinged lid with a recessed, rubber gasket for a tight seal, a drain fitting and polyethylene mounting plates.
- The cooler/livewell has a double wall, foamed insulated interior.

50 QUART

- Overall height 34-3/4", width 29", depth 18". Height to top of seat: 20".

Order No. Mfg. No. / Description Price
263397 (WD159-784) White **\$396.98** D

70 QUART

- Overall height 34-3/4", width 32", depth 18". Height to top of seat: 20".

Order No. Mfg. No. / Description Price
263400 (WD156-784) White **\$407.98** D

- Fun & Flotation
- Anchor & Dock
- Safety
- Electronics
- Trolling Motors
- Lighting
- Electrical
- Topside Acc.
- Cockpit & Deck
- Instruments
- Steering, Controls
- Perform.
- Fuel System
- Engine & Parts
- Engine Care
- Propellers
- Seating & Pedestals
- Tops & Covers
- Pumps
- Cleaning & Care
- Paint & Paint Acc.
- Hardware, Fasteners
- Trailering
- Misc.
- Comm.

Taco Marine Neptune III Leaning Posts



- Fun & Flotation
- Anchor & Dock
- Safety
- Electronics
- Trolling Motors
- Lighting
- Electrical
- Topside Acc.
- Cockpit & Deck
- Instruments
- Steering, Controls
- Perform.
- Fuel System
- Engine & Parts
- Engine Care
- Propellers
- Seating & Pedestals
- Tops & Covers
- Pumps
- Cleaning & Care
- Paint & Paint Acc.
- Hardware, Fasteners
- Trailer
- Misc.
- Comm.

- Aluminum frame, spiral sanded, bright dip anodized finish.
- Folding footrest.
- Rod holders included.
- One-piece welded frame construction made from marine-grade aluminum.
- Seat cushions constructed with marine-grade vinyl, foam and PVC board substrate.
- Anti-warp and anti-rot.
- Mildew, fungus and UV-resistant.
- Cooler storage area and strap.
- Ships UPS.

Order No.	Mfg. No. / Description	Price
484965	(L10-2005BSA1)	\$880.98 F
484980	(L102010BSA-1) Includes: Backrest and Grab Rail	\$1,460.98 F

C & M Marine Products Deluxe Leaning Post with Livewell



- Comes with all stainless steel (corrosion-proof) hardware, white pleated upholstery and ultra-violet resistant white gelcoat.
- The seat opens for storage and has approx. 40 gallon livewell and comes with 4 stainless steel rod holders.
- Includes a white powder coated aluminum welded frame backrest with 4 rod holders.
- Can be purchased without the backrest, contact your sales rep for details.
- Perfect for boats 22' - 28'.
- Dimensions: 30" H x 36" W x 38" D (Does Not Include Flange).

Order No.	Mfg. No. / Description	Price
S/O	(CMDLPLW)	Call for Price

Permatex Super Clear Vinyl Sealant Repair Kit



- Makes invisible repairs from rips, cuts and tears to upholstery, luggage, clothing, etc.
- Contains: Clear vinyl sealant and filler (net 1.5 fl. oz.), special applicator nozzle, grain pattern paper.

Order No.	Mfg. No. / Description	Price
5450124	(81786)	\$4.70 H

Sea-Line Leaning Posts



Order No.	Mfg. No. / Description	Price
723235	(SLLP01) No Rod Holders	\$549.98 D
723235	(SLLP02) With 4 Welded-On Rod Holders	\$602.98 D

- White powder coated finish with all aluminum welded frame.
- Marine grade vinyl upholstery.
- Cooler storage area under seat (holds up to 90 qt. cooler).
- Dimensions: 34" H x 38" W x 18" D.
- 18" x 3" mounting plates.

Carver Leaning Post Cover



Order No.	Mfg. No. / Description	Price
5-8025	(84013P) Gray	\$107.98 R

- Specially designed to protect leaning posts (with or without seat back) on center console style boats.
- Includes 1/4" strong and durable shock cord encased in the hem & heavy duty attached adjustable strap system for a more customized fit.
- Performance Poly-Guard, our toughest marine grade polyester fabric.
- Dimensions: 47" H x 41" W x 24" D.

Permatex Ultra Series Vinyl & Leather Repair Kit



- A complete professional kit with plug-in electric heat iron to make pro-style repairs.
- Contains: Professional electric heat tool, 7 color compounds, clear vinyl adhesive and filler (net .34 fl. oz.), grain pattern paper, metal spatula, plastic dashboard hardening powder.

Order No.	Mfg. No. / Description	Price
5450123	(81781)	\$26.98 H

Economy Fold Down Seats



- State-of-the-art high impact plastic frames.
- Made with deep polyurethane foam padding, covered with rugged marine grade vinyl upholstery which is mildew resistant and UV treated to withstand fading.
- All vinyl covers are sewn with Dacron thread and upholstered with rust resistant staples.
- Aluminum hinges, less swivel.
- Seat height 19", width 16", depth 13-1/2", seat depth 14".

Order No.	Mfg. No. / Description	Price
264139	(WD734PLS-718) Light Blue	\$51.98 LQ
264141	(WD734PLS-717) Gray	\$53.98 LQ
264150	(WD734PLS-716) Brown	\$53.98 F
264165	(WD734PLS-715) Sand	\$53.98 F
264174	(WD734PLS-713) Green	\$53.98 F
264186	(WD734PLS-711) Navy	\$53.98 F
264207	(WD734PLS-710) White	\$53.98 F
264212	(WD734PLS-664) Gray/Charcoal	\$53.98 F
264228	(WD734PLS-662) Sand/Brown	\$53.98 F
264231	(WD734PLS-661) Gray/Red	\$53.98 F
264249	(WD734PLS-660) Gray/Navy	\$53.98 F

Deluxe 2 Tone Hi-Back Fold Down Seats



- Popular full size folding boat seat is constructed with injection molded plastic frame.
- UV and mildew treat marine grade vinyl.
- High compression foam padding. No pinch aluminum hinge.
- Embossed vinyl surface with logo.
- Seat height 21-1/4", width 17", depth 21", seat depth 14".
- Mounts to any 4 Bolt BIA standard pedestal or 5-1/4" hole pattern mounting system.

Order No.	Mfg. No. / Description	Price
263145	(WD588PLS-710) White	\$77.98 F
263146	(WD588PLS-717) Gray	\$77.98 F
263157	(WD588PLS-660) Gray/Navy	\$77.98 F
263169	(WD588PLS-661) Gray/Red	\$77.98 F
263171	(WD588PLS-664) Gray/Charcoal	\$77.98 F
263183	(WD588PLS-662) Sand/Brown	\$77.98 F
263184	(WD588PLS-713) Green	\$77.98 F

Deluxe Hi-Back Fold Down Seats



- State-of-the-art high impact plastic frames.
- Made with deep polyurethane foam padding, covered with rugged marine grade vinyl upholstery which is mildew resistant and UV treated to withstand fading.
- All vinyl covers are sewn with Dacron thread and upholstered with rust-resistant staples.
- Molded plastic seats.
- With cushions.
- Seat height 22-1/2", width 17", depth 19-1/4", seat depth 16".

Order No.	Mfg. No. / Description	Price
263501	(WD892PLS1713) Bright White/Midnight Navy	\$144.98 F
263513	(WD892PLS-911) Marvel Gray/Charcoal	\$144.98 F

Boater Sports Deluxe Highback Fold Down Seats



- Seat height 22", width 17", depth 15".

Order No.	Description	Price
1-BS588PLS660	Gray/Navy	\$55.95 E
1-BS588PLS661	Gray/Red	\$55.95 E
1-BS588PLS662	Sand/Brown	\$55.95 E
1-BS588PLS664	Gray/Charcoal	\$55.95 E
1-BS588PLS710	White	\$55.95 E
1-BS588PLS713	Green	\$55.95 E
1-BS588PLS716	Brown	\$55.95 E
1-BS588PLS717	Gray	\$55.95 E
1-BS588PLS720	Charcoal	\$55.95 E
1-BS588PLS940	OD Green	\$55.95 F

Tempress High Back All-Weather™ Seats



- Bullet proof design, heavy duty construction.
- Features a double contoured seat pan that eliminates pressure points.
- Cushions feature a wrap around design, 500 Denier marine grade UV stable polyester cordura and high density foam inserts.
- Stainless steel hinge pins secure the fold down back.
- Dimensions: 18-1/2" H x 18-1/4" W x 17" D.
- Accepts Tempress proprietary quick disconnect mounting kit for more functionality.

Order No.	Mfg. No. / Description	Price
263284	(45602) Gray/Gray	\$111.98 G
263285	(45608) Charcoal/Gray	\$111.98 G
263290	(45616) White	\$108.98 G

QUICK DISCONNECT MOUNTING KIT

- All-Weather quick disconnect kit.
- Allows seat to swivel on a low profile corrosion proof disk.

Order No.	Mfg. No. / Description	Price
263295	(45930) White	\$31.98 G



- Fun & Flotation
- Anchor & Dock
- Safety
- Electronics
- Trolling Motors
- Lighting
- Electrical
- Topside Acc.
- Cockpit & Deck
- Instruments
- Steering, Controls
- Perform.
- Fuel System
- Engine & Parts
- Engine Care
- Propellers
- Seating & Pedestals
- Tops & Covers
- Pumps
- Cleaning & Care
- Paint & Paint Acc.
- Hardware, Fasteners
- Trailering
- Misc.
- Comm.

- Fun & Flotation
- Anchor & Dock
- Safety
- Electronics
- Trolling Motors
- Lighting
- Electrical
- Topside Acc.
- Cockpit & Deck
- Instruments
- Steering, Controls
- Perform.
- Fuel System
- Engine & Parts
- Engine Care
- Propellers
- Seating & Pedestals
- Tops & Covers
- Pumps
- Cleaning & Care
- Paint & Paint Acc.
- Hardware, Fasteners
- Trailer
- Misc.
- Comm.

Tempress High Back Navistyle™ Seats



- A perfect blend of ergonomic craftsmanship and smooth functionality.
- Subtle curves provide lumbar support while the tapered sides allow for the lateral movements.
- Features no-pinch hinge and automatic locking mechanism.
- Dimensions: 23-1/2" H x 18-1/2" W x 19-1/2" D.

Order No.	Mfg. No. / Description	Price
262713	(54800) White	\$148.98 F
262725	(54907) Charcoal/Gray	\$148.98 F

Tempress Low Back Fishing Seat



- Constructed of materials designed to withstand the rigors of the marine environment.
- Built in lumbar support and a rolled front edge for comfort, durability, and superior style.

Order No.	Mfg. No. / Description	Price
263300	(56101) White	\$279.98 LQ

Marpac Pro Casting Seats



- Fits any standard pedestal.
- Designed to fit most bass casting platforms.
- Comfortably cushioned with a plastic frame and covered in a durable marine grade vinyl.
- Holds up against the toughest marine environments.
- Dimensions: 14" wide x 10" deep x 5" tall.
- Sold in pairs only. Priced each.

Order No.	Description	Price	Order No.	Description	Price
7-7815	Gray	\$21.98 G	7-7819	White	\$21.98 G
7-7817	Blue	\$21.98 G	7-7821	Red	\$21.98 G

Boater Sports Pro Pedestal Seats



- Seat height 5-1/2", width 15-1/2", depth 11".

Order No.	Description	Price	Order No.	Description	Price
1-BS112P710	White	\$18.25 F	1-BS112P716	Brown	\$18.25 F
1-BS112P711	Navy	\$18.25 F	1-BS112P717	Gray	\$18.25 F
1-BS112P712	Red	\$18.25 F	1-BS112P718	Light Blue	\$18.25 F
1-BS112P713	Green	\$18.25 F	1-BS112P719	Black	\$18.25 F
1-BS112P715	Sand	\$18.25 F	1-BS112P720	Charcoal	\$18.25 F

Boater Sports Seat Shells



Order No.	Mfg. No. / Description	Price
1-58710	(58710) White	\$45.95 J
1-58711	(58711) Black	\$45.95 J
1-58712	(58712) Grey	\$45.95 H

Pro Pedestal Seat



- Heavy duty 28 oz. marine grade vinyl.
- High impact plastic frame.
- Compression foam padding.
- Mildew resistant and UV treated.
- Mounts on any standard pedestal or swivel.
- Seat height 5-1/4", width 15", depth 11" seat depth 8-1/2".

Order No.	Mfg. No. / Description	Price
263210	(WD112BP-720) Charcoal	\$30.98 F

Tempress Camouflage High Back All-Weather™ Seats



- Bullet proof design and heavy duty construction.
- Features a double contoured seat pan that eliminates pressure points.
- Stainless steel hinge pins secure the fold down back and included 1/4" x 20 T-nuts allow mounting to any standard marine swivel, slide or seat spider.
- Includes custom fitted cushion.
- Will also accept the Tempress proprietary Quick Disconnect Mounting Kit for even more functionality.
- These cushions feature a wrap-around design and high density foam inserts.

Order No.	Mfg. No. / Description	Price
263292	(45623) Vinyl Mossy Oak Shadow Grass	\$129.98 F
263293	(45622) Vinyl Mossy Oak Break Up	\$130.98 F

Tempress High Back All-Weather/Profile Replacement Cushion



- This cushion features a wrap around design that provides a clean and professional look.
- 30 oz. marine grade UV stable vinyl and high density foam inserts.
- Fits both our High Back All-Weather and Profile Seat Shells.

Order No.	Mfg. No. / Description	Price
263320	(53130)	\$84.98 F

Camouflage Hunting/Fishing Low Back Fold Down Seats



262612



262610



262600

- 500 denier cordura nylon.
- Injection molded plastic frame.
- Black aluminum hinges.
- Less swivel.
- Seat height 18-3/4", width 15-3/4", depth 18-1/2", seat depth 14".

Order No.	Mfg. No. / Description	Price
262600	(WD618PLS-732) Advantage Max 4	\$72.98 F
262610	(WD618PLS-763) Mossy Oak Break Up	\$72.98 F
262612	(WD618PLS-729) Mossy Oak Shadow Grass	\$72.98 F

Camouflage Hi-Back Fold Down Seat



- 500 denier cordura nylon.
- Injection molded plastic frame.
- Black aluminum no pinch hinges.
- Less swivel.
- Seat height 22", width 16-1/2", depth 18-1/2", seat depth 14-1/2".

Order No.	Mfg. No. / Description	Price
262596	(WD617PLS-763) Mossy Oak Break Up	\$80.98 F

Boater Sports Camouflage Pro Pedestal Seat



- Seat height 5-1/2", width 15-1/2", depth 11".

Order No.	Description	Price
1-BS112P763	Camo	\$18.25 F

Attwood Swivl-Eze Lock'N-Pin Pedestal Kits



- Complete packages includes: Brushed aluminum post, zinc plated seat mount with spring and stainless steel base plate.
- 3/4" pin pedestal.

NON-THREADED - MAX 4 CAMO

Order No.	Mfg. No. / Description	Price
587378	(97749C-7) 7" x 7" Base Plate, 11" Post (2114C)	\$88.98 F
587380	(97750C-7) 7" x 7" Base Plate, 13" Post (2134C)	\$97.98 F

Boater Sports Southern Oak Camo Seat



- Seat height 22", width 17", depth 15".

Order No.	Description	Price
1-BS617PLS763	Southern Oak Camo	\$55.95 E

Camouflage Big Man Hunting/Fishing Fold Down Seat



- 500 denier cordura nylon.
- Injection molded plastic frame.
- Black aluminum no pinch hinges.
- Less swivel.
- Seat height 22-3/4", width 22-1/4", depth 20", seat depth 15-1/2".

Order No.	Mfg. No. / Description	Price
262613	(WD619PLS-729) Mossy Oak Shadow Grass	\$134.98 F

Camouflage Deluxe Molded Fold Down Seat



- 500 denier cordura nylon cushions.
- Injection molded plastic frame.
- Mounting screws included.
- Seat height 15-3/4", width 20-1/4", depth 19-3/4", seat depth 15-1/2".

Order No.	Mfg. No. / Description	Price
262624	(WD139CLST732) Advantage Maxx 4 with Tan Plastic Shell	\$76.98 F

Camouflage Pedestal Seat



- 500 denier cordura nylon.
- Injection molded plastic frame.
- 5-1/4" hole pattern.
- Mounting screws included.
- Seat height 5-1/4", width 15", depth 11", seat depth 8-1/2".

Order No.	Mfg. No. / Description	Price
263250	(WD112BP-729) Mossy Oak Shadow Grass	\$34.98 F

Boater Sports Seat Cushions



Order No.	Mfg. No. / Description	Price
1-58730	(58730) White	\$49.95 H
1-58731	(58731) Gray	\$49.95 H
1-58732	(58732) Southern Oak Camo	\$59.95 L

- Fun & Flotation
- Anchor & Dock
- Safety
- Electronics
- Trolling Motors
- Lighting
- Electrical
- Topside Acc.
- Cockpit & Deck
- Instruments
- Steering, Controls
- Perform.
- Fuel System
- Engine & Parts
- Engine Care
- Propellers
- Seating & Pedestals
- Tops & Covers
- Pumps
- Cleaning & Care
- Paint & Paint Acc.
- Hardware, Fasteners
- Trailering
- Misc.
- Comm.

Lounge Seats with Plastic Frame



- Deluxe Series 37" pontoon bench seat features injection molded plastic frame.
- High compression foam padding.
- UV and mildew treated marine grade vinyl.
- Hinge seat to reveal storage area.
- Rotational molded plastic base with pre-drilled drain holes.
- Seat dims.: Height 29-1/4", width 37", depth 24", seat depth 17-1/4".
- Base footprint: Height 11", length 36", depth 22-1/2".

Order No.	Mfg. No. / Description	Price
264315	(WD100-1011) Light Gray/Navy/Blue	\$328.98 E
263638	(WD100-1012) Light Gray/Charcoal/Red	\$328.98 E

Radius Corner Sections with Plastic Frame



- Deluxe Series radius corner section features injection molded plastic frame.
- High compression foam padding.
- UV and mildew treated marine grade vinyl.
- Seat cushion lifts up for storage.
- Rotational molded plastic base with pre-drilled drain holes.
- This corner unit will fit in both square and radius corner railings.
- Seat dims.: Height 29-1/4", width 25-3/8", depth 32-3/4", seat depth 23".
- Base footprint: Height 11", width 25-1/2", depth 32-3/4".

Order No.	Mfg. No. / Description	Price
264539	(WD133-1011) Light Gray/Navy/Blue	\$326.98 E
264515	(WD133-1012) Light Gray/Charcoal/Red	\$326.98 E

Deluxe Bucket-Style Captain's Chairs with Plastic Frame



- Deluxe Series helm bucket seat features injection molded plastic frame.
- High compression foam padding.
- UV and mildew treated marine grade vinyl.
- Mounts to any 4 bolt BIA standard pedestal.
- Height 23", width 24-1/4", depth 22-1/4", seat depth 16-1/2".

Order No.	Mfg. No. / Description	Price
265087	(WD120LS-1011) Light Gray/Navy/Blue	\$284.98 E
265062	(WD120LS-1012) Light Gray/Charcoal/Red	\$284.98 E

Captain's Stands with Plastic Frame



- Deluxe Series steering console features injection molded plastic frame.
- UV and mildew treated marine grade vinyl.
- Dual cup holders.
- Easy access door panel.
- Height 29-1/4", width 26", depth 18".

Order No.	Mfg. No. / Description	Price
264933	(WD115-1011) Light Gray/Navy/Blue	\$299.98 E
264919	(WD115-1012) Light Gray/Charcoal/Red	\$299.98 E

Arm Rests with Plastic Frame



- Deluxe Series arm rest features injection molded plastic frame.
- UV and mildew treated marine grade vinyl.
- Single cup holder.
- Height 22-1/2", width 9", depth 22-3/4".

Order No.	Mfg. No. / Description	Price
264604	(WD105-221) Square Arm Rest Gray	\$115.98 E
264717	(WD112-221) Radius Arm Rest - Right Gray	\$115.98 E
264818	(WD110-221) Radius Arm Rest - Left Gray	\$115.98 E

Deluxe Lounge Seats with Plastic Frame



- Deluxe 10" base lounge fits most 16' - 19' boats.
- Injection molded plastic base is color matched and texturized to match UV and mildew treated marine grade vinyl.
- Embossed vinyl surface.
- High compression foam padding.
- Strong aluminum legs fold out for sunbathing.
- Easy assembly.
- Height 28", width 17-1/2", depth 14-1/4", upright length 45-1/2", extended length 64-1/2", seat depth 14-1/2".
- Base footprint: 13-1/2" x 36".

Order No.	Mfg. No. / Description	Price
263608	(WD707P-1-710) White	\$258.98 F
263610	(WD707P-1-711) Navy	\$258.98 F
263613	(WD707P-1-717) Gray	\$258.98 F

Deluxe Jump Seat with Plastic Frame



- Deluxe 10" base universal jump seat features color matched and texturized injection molded plastic frame.
- UV and mildew treated marine grade vinyl.
- High compression foam padding.
- Seat cushion lifts up for storage.
- Easy assembly.
- Height 27-3/4", width 16", depth 17-1/2", seat depth 12".
- Base footprint: 14" x 13-1/4".

Order No.	Mfg. No. / Description	Price
266568	(WD1414P-717) Gray	\$147.98 LQ

- Fun & Flotation
- Anchor & Dock
- Safety
- Electronics
- Trolling Motors
- Lighting
- Electrical
- Topside Acc.
- Cockpit & Deck
- Instruments
- Steering, Controls
- Perform.
- Fuel System
- Engine & Parts
- Engine Care
- Propellers
- Seating & Pedestals
- Tops & Covers
- Pumps
- Cleaning & Care
- Paint & Paint Acc.
- Hardware, Fasteners
- Trailer
- Misc.
- Comm.

Garelick EEz-In Fixed Height Seat Bases - Smooth Finish



- Polished finish.
- Mounts any seat securely.
- 4 prong spider swivels 360° and locks positively.
- 2-7/8" diameter smooth stanchion tube, 9-1/4" diameter base plate.

Order No.	Mfg. No. / Description	Price
392009	(75031:01) Height 9"	\$125.98 F
392023	(75032:01) Height 18"	\$158.98 F
392035	(75033:01) Height 24"	\$146.98 F
392047	(75034:01) Height 30"	\$159.98 F
392100	(99023:01) Anodized Aluminum Swivel Seat Mount Top	\$55.98 F

Garelick EEz-In Fixed Overall Height Pedestals - Ribbed Series



- Anodized aluminum finish.
- Accepts Garelick fore and aft seat slides and 360° swivel spider combinations.
- 2-7/8" diameter ribbed stanchion tube, 9-1/4" diameter 6 hole base plate.

Order No.	Mfg. No. / Description	Price
392085	(75530:01) Height 12"	\$84.98 F
392097	(75532:01) Height 18"	\$94.98 F

Fixed Height Pedestal



- ABYC Class AD Driver rated premium quality 15" fixed pedestal with WD374 Seat Slide.
- Slide features 5" of fore and aft travel.
- Slide constructed of extruded and polished aluminum with locking handle.
- Thick wall 2-7/8" diameter post.
- 9" diameter raised polished aluminum base plate with knurled finish recessed mounting holes.
- Seat mount is heavy duty cast texturized aluminum with plastic covered stainless steel adjustment handles.
- Swivels 360° or locks down tight.
- 5-1/4" hole pattern fits virtually all seat brands.

Order No.	Mfg. No. / Description	Price
512008	(WP-23-15-374) Height 15"	\$139.98 F

Adjustable Height Locking Pedestal



- ABYC Class AD Driver rated 12" to 18" adjustable pedestal with WD374 Seat Slide.
- Slide features 5" of fore and aft travel.
- Slide constructed of extruded and polished aluminum.
- Seat mount constructed with heavy duty cast aluminum texturized finish.
- Plastic covered stainless steel adjustment handles allows 360° or total lock down.
- Height adjustment knob pulls out to raise or lower.
- 2-7/8" diameter post works effortlessly with inner post.
- 5-1/4" hole pattern fits virtually all seat brands.
- Adjustable height 12" - 18".

Order No.	Mfg. No. / Description	Price
512015	(WP21-374)	\$180.98 F

Garelick EEz-In Adjustable Height Seat Bases - Smooth Finish



- Polished finish.
- Seat raises or lowers, locks at desired height.
- 4 prong spider swivels 360° and locks positively.
- 2-7/8" diameter smooth stanchion tube, 9-1/4" diameter base plate.

Order No.	Mfg. No. / Description	Price
392061	(75035:01) From 12" to 17"	\$175.98 F
392073	(75028:01) From 18" to 24"	\$191.98 F

Garelick EEz-In Blue Water Adjustable Height Positive Pin Type Pedestal - Ribbed Finish



- Anodized aluminum finish.
- Pin secures base at specific height in 1" increments.
- Stainless steel lock pin locates securing hole easily.
- 2-7/8" diameter ribbed stanchion tube, 9-1/4" diameter 6 hole base plate.

Order No.	Mfg. No. / Description	Price
392124	(75635:01) From 12" to 17"	\$173.98 LQ

Fixed Height Pedestal



- ABYC Class AD Driver rated premium quality 15" fixed height pedestal features thick wall 2-7/8" diameter post.
- 9" diameter raised polished aluminum base plate with knurled finish recessed mounting holes.
- Seat mount is heavy duty cast texturized cast aluminum with plastic covered stainless steel adjustment handles.
- Swivels 360° or locks down tight.
- 5-1/4" hole pattern fits virtually all seat brands.

Order No.	Mfg. No. / Description	Price
512006	(WP23-15S) Height 15"	\$110.98 F

Attwood Swivl-Eze Adjustable Height Pedestal



- Sturdy 2-3/8" diameter bell pedestal.
- Ergonomic positive-locking handles with stainless steel components.
- Bases have underside ribs for superior strength.
- Super satin anodized post.
- Engineered to exceed ABYC Standards.
- Adjustable height 12-1/2" to 15-1/2".

Order No.	Mfg. No. / Description	Price
512012	(2385405)	\$101.98 G

Attwood Swivl-Eze Adjustable Height Power Pedestal



- Heavy duty 2-7/8" post and 9" diameter machined base.
- Ergonomic positive-locking handles with stainless steel components.
- PowerLock Multi-Action handle controls both swiveling and height adjustment.
- EZ-Lock CAM-Action makes seat removal simple.
- Adjustable height 14-1/2" to 19-1/2".

Order No.	Mfg. No. / Description	Price
512014	(89101)	\$278.98 LQ

- Fun & Flotation
- Anchor & Dock
- Safety
- Electronics
- Trolling Motors
- Lighting
- Electrical
- Topside Acc.
- Cockpit & Deck
- Instruments
- Steering, Controls
- Perform.
- Fuel System
- Engine & Parts
- Engine Care
- Propellers
- Seating & Pedestals
- Tops & Covers
- Pumps
- Cleaning & Care
- Paint & Paint Acc.
- Hardware, Fasteners
- Trailering
- Misc.
- Comm.

Garelick EEz-In Toggler Brand Stainless Steel Toggle Bolt Anchors



- Works with all Garelick seat pedestal bases.
- Positively secures seats and table bases to decks or any accessory to cabin walls.
- Made of 304 stainless steel.
- For deck or cabin thickness from 3/8" to 3-5/8", requires 1/2" holes.
- 1/4" - 20 size anchor only.

Order No.	Mfg. No. / Description	Price
359972	(TOG21021) Contains: 50 Each	\$5.98 G
359962	(21022:01) Contains: 1 Pair	\$17.98 R
392136	(21026:01) Contains: 6 Each	\$39.98 F

Garelick EEz-In Solid Detachable Stanchion Plate



- Plate mounts to deck surface for base attachment.
- Allows base and seat to be removed.
- 9-1/4" diameter machined anodized aluminum, 3 stainless cap screws and allen wrench included.
- Adapts to all models, simply enlarge 6 base holes to 7/16" diameter.
- Adds reinforced safety and comfort to pedestal installations.

Order No.	Mfg. No. / Description	Price
392148	(75056:01)	\$69.98 F

Adjustable Height Aluminum Bell Pedestal

- Fun & Flotation
- Anchor & Dock
- Safety
- Electronics
- Trolling Motors
- Lighting

- Bell pedestal adjusts 13" to 18".
- Features powdered coated 10" diameter thick wall cast aluminum base.
- 2-3/8" diameter aluminum post.
- Seat mount swivels 360° with locking mechanism.
- ABYC Class B Rating.
- Mounts to any 5-1/4" hole pattern boat seat.



Order No.	Mfg. No. / Description	Price
263647	(WD1500)	\$86.98 F

Economy Pedestals

- Topside Acc.
- Cockpit & Deck
- Instruments
- Steering, Controls
- Perform.
- Fuel System

- Black powdered coated steel pedestal are great for small boats.
- ABYC Class B Rated.
- 5-1/4" hole pattern fit virtually all seat brands.



Order No.	Mfg. No. / Description	Price
512040	(WD1251) Height 7"	\$24.98 F
512042	(WD1250) Height 13"	\$25.98 F

Aluminum Fore and Aft Slide

- Engine & Parts
- Engine Care
- Propellers

- ABYC Class AD Driver rated premium quality extruded and polished aluminum seat slide features locking handle and 5" of fore and aft travel.
- Fits locking and non-locking 2-7/8" OD posts or pedestals.
- Seat mount is cast aluminum with textured finish.
- Plastic covered stainless steel handles allow 360° or lock down.
- 5-1/4" hole pattern fits virtually all seat brands.



Order No.	Mfg. No. / Description	Price
511990	(WD374)	\$84.98 F

Garelick EEz-In Millennium Series - Seat Slide System - Ribbed Series



- Low profile design allows 360° of rotation and 6" of smooth, wobble-free fore and aft travel.
- Heavy duty anodized aluminum slide 13-3/4" x 8" plate has standard 5" x 12" hole pattern.
- Left hand lever silver powder coat finish.
- Positive lock spider - rotates 360°, internal cup engages in 10° increments for positive stop lock.
- Swivel: 2-7/8" diameter.
- Includes retaining hardware.

Order No.	Mfg. No. / Description	Price
391906	(21000:01)	\$135.98 G

Springfield Marine Trac-Lock™ Swivel



2-3/8" Seat Mount Swivel

- High strength aluminum with a powder coated finish.
- Size: 2-3/8" with bushing for a snug fit.
- Rotates 360° with a 3° tilt.
- Mounting pattern: 5" x 5".
- Adds 3/4" to height of pedestal.

Order No.	Mfg. No. / Description	Price
550045	(1100031-1) Non-Locking Swivel	\$47.98 LQ

- Seating & Pedestals
- Tops & Covers
- Pumps
- Cleaning & Care
- Paint & Paint Acc.
- Hardware, Fasteners
- Trailer
- Misc.
- Comm.

Cast Aluminum Seat Mount



- Seat mount spider fits 2-7/8" outside diameter posts.
- Features high quality cast aluminum texturized aluminum and rubber inner sleeve.
- Plastic covered stainless steel knob to lock mount or release to allow 360° swivel.
- Plastic paddle handle locks mount down with pre-drilled post.
- 5-1/4" hole pattern fits virtually all seat brands.

Order No. Mfg. No. / Description Price
511988 (WVP94) **\$44.98** F

Garelick EEz-In Millennium Series - Swivel Seat Mount - Ribbed Series



- Silver powder coat finish.
- Low profile design allows 360° of rotation.
- 360° rotation is regulated by dual locking devices - lift the positive lock lever to rotate. Drop the lever to lock in place in 10° increments.
- Secondary twist control offers variable drag adjustment and can be tightened down to lock in place.
- Internal Delrin Bearing Cup provides smooth, gaul-free operation.

Order No. Mfg. No. / Description Price
392251 (99026:01) **\$83.98** F

Attwood Swivl-Eze Deck Mounted Seat Slide



- Constructed of strong aluminum.
- Convenient front control operation.
- Mounts directly to the boat deck.
- 1-5/8" total height.
- For use on stamped and welded seat mounts or cast seat mounts not originally equipped with slider.

Order No. Mfg. No. / Description Price
5870062 (815000) **\$129.98** F

Garelick EEz-In Low Profile Seat Slide and Locking Swivel



- Allows helm or boat seats to adjust fore and aft 6" and swivel 360°.
- Slide mounts under seat in between seat and pedestal base.
- Anodized aluminum with stainless steel hardware.
- Convenient handle provides solid locking at any position.
- Width 8-1/2", length 13", height 3-7/8".

Order No. Mfg. No. / Description Price
392376 (75090:01) **\$175.98** F

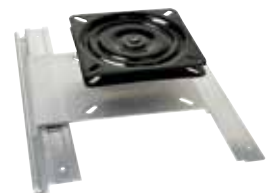
Plastic Universal Seat Mounting Plate



- Injection molded plastic seat mounting plate is ideal for all rotational molded seat frames to provide extra strength.
- 5-1/4" hole pattern with T-nut inserts along with 2 pre-drilled holes on each end allow multiple mounting options.

Order No. Mfg. No. / Description Price
404894 (WV399-1) **\$25.98** LQ

Attwood Swivl-Eze Bench Style Seat Mount



- Great for mounting seats in jon boats.
- Constructed of quality aluminum.

Order No. Mfg. No. / Description Price
581068 (SP-15900) Rail Kit: Seat Plate and 15" Rail **\$50.98** G
581067 (SP-15100) Seat Plate Only **\$23.98** G
581069 (SP-15200) 30" Rails Only **\$31.98** G

Attwood Swivl-Eze Clamp-On Boat Seat Swivel



- Black powder coated swivel.
- Fits most seat hole patterns.
- Adjusts from 7-1/2" to 18".

Order No. Mfg. No. / Description Price
512020 (15700-3) **\$33.98** G

Boater Sports Jon Boat Style Seat Bracket



- Jon boat style seat bracket.
- Non-swivel seat base designed to clamp onto your Jon boat seat.

Order No. Mfg. No. / Description Price
1-54943 (54943) **\$19.95** H

Boater Sports Seat Swivel with Ball Bearings



- Black powder coated.
- 360° ball bearing seat swivel.
- 0° tilt.

Order No. Mfg. No. / Description Price
1-54946 (54946) **\$16.95** H

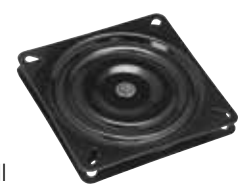
Garelick EEz-In Boat Seat Swivel - Angled



- Rotates 360°.
- Fits most standard seat hole patterns.
- Self-lubricated, noncorrosive poly swivel bearings.
- Angled with 7° angle.

Order No. Mfg. No. / Description Price
360848 (75017:01) **\$26.98** F

Ball Bearing Swivel



- Trendler ball bearing swivel is still produced in the USA.
- Black powder coated rugged steel plate.
- Swivels 360°.
- 6-1/4" with 5-1/4" hole pattern fits virtually all brand of seats.

Order No. Mfg. No. / Description Price
293333 (WD10) **\$14.98** H

- Fun & Flotation
- Anchor & Dock
- Safety
- Electronics
- Trolling Motors
- Lighting
- Electrical
- Topside Acc.
- Cockpit & Deck
- Instruments
- Steering, Controls
- Perform.
- Fuel System
- Engine & Parts
- Engine Care
- Propellers
- Seating & Pedestals
- Tops & Covers
- Pumps
- Cleaning & Care
- Paint & Paint Acc.
- Hardware, Fasteners
- Trailering
- Misc.
- Comm.

Small Helmsman Seat Hinge - Aluminum

- One pair of aluminum seat hinges.
- Stainless steel pin.
- 1 left side and 1 right side.
- Dimensions: Height 10", length 8".



Order No.	Mfg. No. / Description	Price
264301	(WD13)	\$19.98 E

Attwood Swivl-Eze Offset Seat Swivel

- Swivels 360° allowing a 6" offset from extension post.
- Zinc plated for corrosion resistance with olite bronze bushings for added durability.
- Seat mount and pedestal sold separately.



Order No.	Mfg. No. / Description	Price
587383	(7062-3)	\$44.98 G

Attwood Swivl-Eze Lock'N-Pin Power Pedestals - Adjustable

- Brushed aluminum.
- Adjustable power pedestal for use with pin seat mount.
- 3/4" pin pedestal. Steel pin. 1.77" diameter.



NON-THREADED

Order No.	Mfg. No. / Description	Price
5870028	(3004-R) Adjustable Height 15" - 18"	\$107.98 H
5870032	(3204-R) Adjustable Height 24" - 30"	\$114.98 R

THREADED

Order No.	Mfg. No. / Description	Price
587622	(3004-R-T) Adjustable Height 15" - 18"	\$108.98 R
587595	(3204-R-T) Adjustable Height 24" - 30"	\$127.98 R

Attwood Swivl-Eze Lock'N-Pin Power Pedestals - Adjustable

- Brushed aluminum.
- Adjustable power pedestal with integral seat mount.
- 3/4" pin pedestal. Steel pin. 1.77" diameter.



NON-THREADED

Order No.	Mfg. No. / Description	Price
5870027	(3004) Adj. Height 14" - 17"	\$99.98 H
587572	(3204) Adj. Height 24" - 30", Pro-Post	\$113.98 R

THREADED

Order No.	Mfg. No. / Description	Price
587634	(3004-T) Adj. Height 14" - 17"	\$108.98 R
587571	(3204-T) Adj. Height 24" - 30", Pro-Post	\$113.98 R

Attwood Swivl-Eze Lock'N-Pin Base Plates - Stainless Steel

- Stainless steel. 3/4" pin pedestal.
- ABYC Code: B.

NYLON BUSHING

Order No.	Mfg. No. / Description	Price
587906	(67739) 7" x 7" Non-Threaded Bulk	\$40.98 R
582063	(SP-67739) 7" x 7" Non-Threaded Skin Pack	\$46.98 G
587330	(SP-67739-T) 7" x 7" Threaded Skin Pack	\$43.98 F
587909	(66839) 6" x 8" Non-Threaded Bulk	\$40.98 R
587310	(6683-T) 6" x 8" Threaded Bulk	\$40.98 R
587312	(64839) 4" x 8" Non-Threaded Bulk	\$30.98 F
5870046	(64439-SS) 4" x 4" Non-Threaded Bulk	\$36.98 Q

Boater Sports Seat Pedestal Set



- Seat mount kit: Pin type mount, base and 11" post.
- Zinc plated seat mount, aluminum extension post and stainless steel 7" x 7" base.

Order No.	Mfg. No. / Description	Price
1-54900	(54900) Height 11"	\$59.95 H

Attwood Swivl-Eze Lock'N-Pin Pedestal Kits



- Complete packages includes: Brushed aluminum post, zinc plated seat mount with spring and stainless steel base plate.
- 3/4" pin pedestal.

NON-THREADED

Order No.	Mfg. No. / Description	Price
587482	(96839) 6" x 8" Base Plate, 11" Post (2114)	\$71.98 G
587494	(97739) 7" x 7" Base Plate, 11" Post (2114)	\$71.98 Q

THREADED

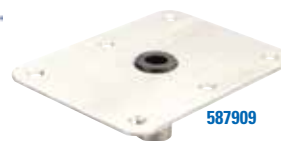
Order No.	Mfg. No. / Description	Price
587519	(977339-T) 7" x 7" Base Plate, 13" Post (2134-T)	\$68.98 F

NON-THREADED - SATIN FINISH

Order No.	Mfg. No. / Description	Price
587377	(97749-7) 7" x 7" Base Plate, 11" Post (2114)	\$57.98 F
587379	(97750-7) 7" x 7" Base Plate, 13" Post (2134)	\$76.98 F

NON-THREADED - MAX 4 CAMO

Order No.	Mfg. No. / Description	Price
587378	(97749C-7) 7" x 7" Base Plate, 11" Post (2114C)	\$88.98 F
587380	(97750C-7) 7" x 7" Base Plate, 13" Post (2134C)	\$97.98 F



BRONZE BUSHING

Order No.	Mfg. No. / Description	Price
587329	(6773-T) 7" x 7" Threaded Bulk	\$38.98 R
5870047	(6483) 4" x 8" Non-Threaded Bulk	\$31.98 R
587319	(6483-T) 4" x 8" Threaded Bulk	\$36.98 F

Attwood Swivl-Eze Lock'N-Pin Base Plates - Aluminum



- Aluminum.
- 3/4" pin pedestal.
- Nylon bushing.
- Non-Threaded.
- ABYC Code: B.

Order No.	Mfg. No. / Description	Price
5870056	(67749) 7" x 7" Bulk	\$20.98 D
587381	(SP-67749) 7" x 7" Skin Pack	\$35.98 F

Attwood Swivl-Eze Lock'N-Pin Seat Mounts



- 3/4" pin pedestals.
- 3° tilt.
- ABYC Code: B.

ZINC PLATED STEEL

Order No.	Mfg. No. / Description	Price
587102	(1002) 2-3/4" Steel Pin with Spring	\$13.98 H
587110	(1002-S) 2-1/2" Steel Pin without Spring	\$17.98 R
587127	(1002-ADJ-3) Adjusts From Flat to 22° to 45°	\$75.98 G

ALL STAINLESS STEEL

Order No.	Mfg. No. / Description	Price
587111	(1002-SS) 2-3/4" Stainless Steel Pin without Spring	\$43.98 Q

Attwood Swivl-Eze Lock'N-Pin Posts - Fixed Height



- Brushed aluminum.
- 3/4" pin pedestal.
- 1.50" diameter.
- Tough nylon swivel bushings provide smooth seat rotation.
- ABYC Code: B.

STEEL PIN

Order No.	Mfg. No. / Description	Price
587150	(2064) Height 6" Non-Threaded Bulk	\$16.98 G
587204	(2114) Height 11" Non-Threaded Bulk	\$17.98 H
587206	(SP-2114) Height 11" Non-Threaded Skin Pack	\$18.98 H
587216	(2134) Height 13" Non-Threaded Bulk	\$17.98 H
582065	(SP-2134) Height 13" Non-Threaded Skin Pack	\$20.98 G
587217	(2164) Height 16" Non-Threaded Bulk	\$20.98 R
5870022	(2244) Height 24" Non-Threaded Bulk	\$32.98 H
587205	(2114-T) Height 11" Threaded Bulk	\$17.98 R
587230	(2134-T) Height 13" Threaded Bulk	\$20.98 R
587209	(SP-2134-T) Height 13" Threaded Skin Pack	\$21.98 H
5870021	(2164-T) Height 16" Threaded Bulk	\$23.98 H

STAINLESS STEEL PIN - PRO-POST

Order No.	Mfg. No. / Description	Price
587208	(2134-T-SS) Height 13" Threaded Bulk	\$28.98 R

Boater Sports Stainless Steel Bases



- High strength stainless steel construction with a satin finish.
- Accepts all 3/4" pin-type extensions.
- Nylon bushing.

Order No.	Mfg. No. / Description	Price
1-54936	(54936) Non-Threaded	\$34.55 H
1-54937	(54937) Threaded	\$34.95 H

Boater Sports 3/4" Pin-Type Seat Mount



- Plated steel construction with spring to absorb shock.
- Fits all standard 3/4" pin applications.
- 360° rotation.

Order No.	Mfg. No. / Description	Price
1-54934	(54934)	\$11.95 H

T-H Marine Pedestal Base Plug



- Keep water out of your seat pedestal base.
- Seals pedestal base when not in use.
- Fits all 1.77" bases.
- Slide Pin for easy removal.
- Molded - won't rust or corrode.

Order No.	Mfg. No. / Description	Price
642692	(PBP1DP)	\$8.98 Q

Boater Sports 3/4" Pin-Type Fixed Extension Posts



- Marine grade satin finished aluminum.

Order No.	Mfg. No. / Description	Price
1-54930	(54930) Height 11" Non-Threaded Skin Pack	\$14.29 H
1-54929	(54929) Height 11" Threaded Skin Pack	\$11.95 H
1-54931	(54931) Height 13" Threaded Skin Pack	\$15.95 H

Attwood Swivl-Eze Lock'N-Pin Offset Post - Fixed Height



- Polished stainless steel.
- Offset post 6".
- 3/4" pin pedestal.
- Height 13".
- 1.50" diameter.
- Stainless steel pin.
- Threaded.

Order No.	Mfg. No. / Description	Price
586402	(7153-T-SS)	\$82.98 G

- Fun & Flotation
- Anchor & Dock
- Safety
- Electronics
- Trolling Motors
- Lighting
- Electrical
- Topside Acc.
- Cockpit & Deck
- Instruments
- Steering, Controls
- Perform.
- Fuel System
- Engine & Parts
- Engine Care
- Propellers
- Seating & Pedestals
- Tops & Covers
- Pumps
- Cleaning & Care
- Paint & Paint Acc.
- Hardware, Fasteners
- Trailering
- Misc.
- Comm.

Attwood Swivl-Eze Lock'N-Pin Posts - Adjustable Height



- Brushed aluminum.
- 3/4" pin pedestal.
- 1.50" diameter.
- Pro-Post.
- Steel pin.
- Adjustable height 25" to 31".
- ABYC Code: B.

Order No.	Mfg. No. / Description	Price
587557	(2244-ADJ) Non-Threaded Bulk	\$54.98 R
587558	(SP-2244-ADJ) Non-Threaded Skin Pack	\$59.98 Q
5870024	(2244-ADJ-T) Threaded Bulk	\$57.98 H
587556	(SP2244-ADJ-T) Threaded Skin Pack	\$60.98 Q

Springfield Marine Replacement Bushing



Order No.	Mfg. No. / Description	Price
5500054	(2100032) Adapts 2-3/8" to 3/4" Pin-Style Post	\$26.98 LQ

Springfield Marine Kingpin™ Series Hi-Lo 3 Piece Packages



- Perfect for those of you who need the flexibility of different heights quickly.
- For "Hi" seating insert post into floor base, for "Lo" seating insert seat mount into floor base.
- 3 Piece Set Includes: KingPin satin finish post, E-coat finish swivel and KingPin 7" x 7" satin finish base.
- Hefty 1-3/4" diameter post and reinforcement ring.
- It has a 3/4" pin for your post.

Order No.	Mfg. No. / Description	Price
550355	(1615433) Height 13", Standard	\$91.98 LQ
550170	(1630401) Height 11", Threaded	\$82.98 LQ

Springfield Marine Plug-In™ Series Power-Rise Air-Ride Package



- This Plug-In Power-Rise pedestal has a unique notched/keyed design that provides security against rotation in the floor base.
- Post diameter 2-3/8" with a satin anodized finish.
- Adjustment height 13-1/4" to 17-1/4".
- Seat mount is powdered coated and swivels 360° with a 3° tilt and a mounting pattern of 5" x 5".
- Works with all "Springfield" Plug-In 2-3/8" floor bases.

Order No.	Mfg. No. / Description	Price
550095	(1300601) Locking	\$208.98 LQ

Boater Sports 3/4" Pin-Type Adjustable Extension Post



- 3/4" Pin type extension post.
- Brushed aluminum.
- Non-threaded.
- Adjusts from 25" to 31".

Order No.	Mfg. No. / Description	Price
1-54932	(54932) Skin Pack	\$29.95 H

Attwood Swivl-Eze Pedestal Replacement Parts



Order No.	Mfg. No. / Description	Price
581066	(SP-14000) Pin Adapter, 1.77" to 3/4"	\$22.98 G
587963	(SP-102) Seat Mount Spring	\$4.25 LQ
587975	(SP-201) Replacement Bushing, White Nylon	\$4.94 R
587987	(SP-30006) Replacement Bushing, Bronze	\$10.98 R

Springfield Marine Kingpin™ Offset Post with 3/4" Pin



- The Kingpin post has a 3/4" pin that extends from the bottom of the post.
- E-coated pin.
- Satin finish post.
- Provides a full 5" of offset extension.
- Top of post has a 3/4" socket for the "Kingpin" seat mount.
- Works with all "Springfield" Kingpin floor bases.

Order No.	Mfg. No. / Description	Price
550175	(1630402-CSS) Height 13", Threaded	\$50.98 LQ

Springfield Marine Plug-In™ Series Power-Rise Air-Ride Pedestal



- This Plug-In Power-Rise pedestal has a unique notched/keyed design that provides security against rotation in the floor base.
- Post diameter 2-3/8" with a satin anodized finish.
- Has a locking collar so it can be locked in any position or unlock to rotate freely.
- Adjustment height 22-1/4" to 28-3/4".
- Seat mount is powder coated with a 5" x 5" mounting pattern.
- Works with all "Springfield" Plug-In 2-3/8" floor bases.

Order No.	Mfg. No. / Description	Price
550110	(1300902)	\$169.98 LQ

- Fun & Flotation
- Anchor & Dock
- Safety
- Electronics
- Trolling Motors
- Lighting
- Electrical
- Topside Acc.
- Cockpit & Deck
- Instruments
- Steering, Controls
- Perform.
- Fuel System
- Engine & Parts
- Engine Care
- Propellers
- Seating & Pedestals
- Tops & Covers
- Pumps
- Cleaning & Care
- Paint & Paint Acc.
- Hardware, Fasteners
- Trailer
- Misc.
- Comm.

Springfield Marine Taper-Lock™ Series Aluminum Base



- Brushed satin finish is scratch-resistant.
- High-strength aluminum to withstand all conditions.
- Below the deck mount requires a 3-1/2" hole in deck. **5500033** does not require a hole in deck.
- Use with any Tape-Lock Post.

Order No. Mfg. No. / Description Price
5500033 (1600010) 9" Surface Mount Base with 8" Hole Pattern **\$52.98** LQ

Springfield Marine Spring-Lock™ Non-Locking Base



- 9" round high-strength aluminum base.
- Satin finish.
- Below the deck mount, requires a 4" hole in deck.
- Use with any non-locking Spring-Lock or Clip-Lock post.

Order No. Mfg. No. / Description Price
5500042 (1640002) **\$38.98** LQ

Attwood Swivl-Eze Snap-Lock 1.77" Posts



- All Snap-Lock Series components snap and hold together.
- Posts are sturdy bright anodized aluminum.
- Includes a larger locking clip with a metal insert that slows the posts to lock into bases for added safety. Press button to release.
- Both the Snap-Lock and locking clip are engineered to prevent unintentional detachment.
- ABYC Code: B.

FIXED HEIGHT POST

Order No. Mfg. No. / Description Price
5870026 (29250) Fixed Height 25", Pro-Post, Clear Anodized **\$49.98** LQ

ADJUSTABLE HEIGHT POSTS WITH INTEGRAL SEAT MOUNTS

Order No. Mfg. No. / Description Price
587988 (39004) Adjustable Height 16" - 20" **\$106.98** R
5870037 (39204) Adjustable Height 24" - 30", Pro-Post **\$117.98** H

Springfield Marine Spring-Lock™ Fixed Height Post



- Hefty 1-3/4" diameter stainless steel.
- Use with Spring-Lock non-locking seat mount.
- Use with any non-locking Spring-Lock base.

Order No. Mfg. No. / Description Price
5500046 (1640404) Height 13-1/2" **\$39.98** H



Springfield Marine Post Bushing



- Replacement post bushing for Spring-Lock.

Order No. Mfg. No. / Description Price
2100013 (2100013) **\$9.99** H



Springfield Marine Spring-Lock™ Base Socket Cover



- 1-3/4" deck base socket cover.
- It is constructed of a very durable black plastic.
- Packaged and sold in pairs.

Order No. Mfg. No. / Description Price
5500060 (2100091) **\$6.98** LQ



Swivl-Eze Snap-Lock 1.77" Seat Mount



- Black E-coated steel for superior construction.
- 3° tilt.
- 1.77" extension poles.
- Installed height: 2".
- Designed to permanently lock into the post, in any swiveling position.
- ABYC Code: AN.

Order No. Mfg. No. / Description Price
587566 (19000) **\$30.98** LQ

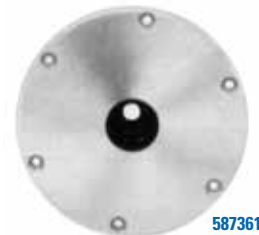


Attwood Swivl-Eze Snap-Lock 1.77 Base Plates



- 1.77" extension poles.
- Depth below deck: 3".
- ABYC Code: AO.

Order No. Mfg. No. / Description Price
587361 (67904) 9" Round, Aluminum Req. Dia. Mnt. Hole: 2-1/2" **\$42.98** Q
5870058 (69773) 7" x 7", S/S Req. Dia. Mnt. Hole: 2-3/4" **\$48.98** F



- Fun & Flotation
- Anchor & Dock
- Safety
- Electronics
- Trolling Motors
- Lighting
- Electrical
- Topside Acc.
- Cockpit & Deck
- Instruments
- Steering, Controls
- Perform.
- Fuel System
- Engine & Parts
- Engine Care
- Propellers
- Seating & Pedestals
- Tops & Covers
- Pumps
- Cleaning & Care
- Paint & Paint Acc.
- Hardware, Fasteners
- Trailering
- Misc.
- Comm.

Attwood Swivl-Eze 238 Series Fixed Height Extension Post



- Pedestal tubes are hard-anodized aluminum.
- All springs are stainless steel.
- Bases are bead-blasted (to close aluminum porosity) and clear coated.
- Height measured from deck to top of seat mount.
- ABYC Code: A0.

Order No.	Mfg. No. / Description	Price
588025	(238613-1) Height 13"	\$37.98 LQ

Attwood Swivl-Eze LakeSport 2-3/8" Seat Mount



- Aluminum.
- Ergonomic positive-locking handle with stainless steel components.
- With Friction Control, 3° tilt.
- Without slider.
- Installed height 5/8".
- ABYC Code: AN.

Order No.	Mfg. No. / Description	Price
588065	(818440)	\$34.98 R

Garelick EEz-In Swivel Stanchion Footrest



- Eliminates dangling feel - adds comfort at helm.
- Aluminum casting fits 2-7/8" diameter stanchion.
- Can be locked in any position.
- Traction grooved stepping surface.
- 14" wide, 11.3" deep.

Order No.	Mfg. No. / Description	Price
392198	(75004:01)	\$169.98 F

Garelick EEz-In Oak Footrest



- Used in conjunction with Helmsman Seat.
- Eliminates dangling feet while piloting.
- Stamped aluminum folding side brackets.
- Varnished Oak traction grooved surface.
- Height 7-1/2", depth 8-1/4", width 15".

Order No.	Mfg. No. / Description	Price
360014	(26015:01)	\$73.98 F

Garelick EEz-In Surface Type Fishing Gimbal



- Chrome plated brass.
- Flat surface attachment type.
- Fits all Garelick EEz-In seats.

Order No.	Mfg. No. / Description	Price
360812	(75011:01)	\$79.98 LQ

- Fun & Flotation
- Anchor & Dock
- Safety
- Electronics
- Trolling Motors
- Lighting
- Electrical
- Topside Acc.
- Cockpit & Deck
- Instruments
- Steering, Controls
- Perform.
- Fuel System
- Engine & Parts
- Engine Care
- Propellers
- Seating & Pedestals
- Tops & Covers
- Pumps
- Cleaning & Care
- Paint & Paint Acc.
- Hardware, Fasteners
- Trailer
- Misc.
- Comm.

JIF Marine Ivory Table Kits



- Convenient kits come with table top, 26" stainless steel leg and floor mount.
- Molded high-impact plastic tops.
- 4 cup holders with drain holes.
- Sun, salt and corrosion resistant.
- Cleans easily with soap and water.

Order No.	Mfg. No. / Description	Price
327101	(DSH-KS) Rectangular Table Kit Width 28", Depth 16"	\$54.98 H
327102	(DSI-KS) Octagonal Table Kit Width 20"	\$57.98 H

FLOOR RECEPTACLES - BLACK

- High impact plastic.
- Installs flush to floor.

Order No.	Mfg. No. / Description	Price
327104	(DTZ) Flush Mount	\$9.98 F
327105	(DTY) Surface Mount	\$9.98 F

S & M Marine Fiberglass Table Top



- White.
- Includes built-in cup holders.

Order No.	Mfg. No. / Description	Price
326365	(SM335) Dimensions: 19" x 39"	\$178.98 Q

S & M Marine Lower Table Base



- High performance polymer material, coated black.
- Corrosion resistant polymer.
- Recessed well virtually flush with the floor allows access when table is not in use.
- Diameter 6-1/2".

Order No.	Mfg. No. / Description	Price
326367	(SM340-L)	\$11.98 H

S & M Marine Upper Table Base



Order No.	Mfg. No. / Description	Price
326369	(SM340-U)	\$11.98 H

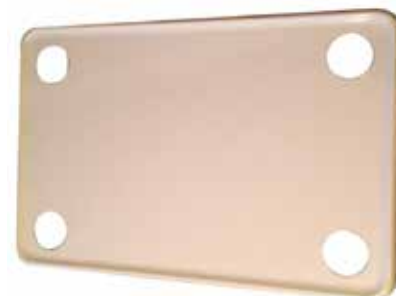
S & M Marine Kidney Shaped Tables



- Includes wood backer.

Order No.	Mfg. No. / Description	Price
326360	(LMP-1028) Black, Lighted	\$241.98 Q
326361	(SM272B) Black	\$146.98 Q
326362	(SM272W) White	\$146.98 Q

S & M Marine Fiberglass Table Tops with Wood Backer



- White.

Order No.	Mfg. No. / Description	Price
326363	(SM273) Dimensions: 19" x 39"	\$157.98 Q
326364	(SM274) Dimensions: 24" x 36"	\$188.98 Q

S & M Marine Round Table Top



- White.
- Includes built-in cup holders.
- UV stable.

Order No.	Mfg. No. / Description	Price
326366	(SM336) Diameter 20"	\$73.98 H

Fun & Flotation

Anchor & Dock

Safety

Electronics

Trolling Motors

Lighting

Electrical

Topside Acc.

Cockpit & Deck

Instruments

Steering, Controls

Perform.

Fuel System

Engine & Parts

Engine Care

Propellers

Seating & Pedestals

Tops & Covers

Pumps

Cleaning & Care

Paint & Paint Acc.

Hardware, Fasteners

Trailering

Misc.

Comm.

S & M Marine Lower Table Base



- High performance polymer material, coated black.
- Corrosion resistant polymer.
- Recessed well virtually flush with the floor allows access when table is not in use.
- Diameter 6-1/2".

Order No.	Mfg. No. / Description	Price
326367	(SM340-L)	\$11.98 H

S & M Marine Upper Table Base



Order No.	Mfg. No. / Description	Price
326369	(SM340-U)	\$11.98 H

S & M Marine Table Leg



- Black powder coat.
- Aluminum alloy table and floor bases also available.
- End caps are tapered to assure secure fit into the bases.
- 2" diameter anodized aluminum leg in 27" height.

Order No.	Mfg. No. / Description	Price
326368	(SM340-TL)	\$29.98 H

Garelick EEz-In Adjustable Table Base



- Manual rise.
- Smooth polished finish.
- Converts dinettes to berths.
- 9" diameter cast aluminum base on each end for support.
- 2-7/8" smooth stanchion tube.
- Tube protrudes 6" below deck.
- Locks any height from 14-1/2" to 29-1/2".

Order No. Mfg. No. / Description Price
360862 (75025:01) **\$209.98** F

Springfield Marine Non-Locking Stowable Table Pedestal Set



- High-strength aluminum table mount.
- 7" diameter aluminum floor base, anodized finish with a hole pattern of 5-3/4", it extends 2" below the deck.
- It requires a 3-1/2" diameter hole into the deck.
- 2-3/8" diameter post, anodized aluminum.
- Post height: 30" (measured from deck to top of swivel).
- Overall length of post is 31-1/4" (measured from end to end).
- Size: 2-3/8" tapered on both ends to 2-1/4".

Order No. Mfg. No. / Description Price
550365 (1660029) **\$116.98** LQ

Springfield Marine Economy Table Post



- 2-7/8" economy post.
- High-strength aluminum with anodized finish.
- Height 27"
- Use with 2-7/8" Stowable Table Mount.
- Use with 2-7/8" Stowable Table Base.

Order No. Mfg. No. / Description Price
550375 (3660127-CAL) **\$64.98** LQ

Springfield Marine Economy Stowable Table Base



- 2-7/8" high-strength aluminum base.
- High strength aluminum.
- 9" diameter with 8" mounting hole pattern.
- Works with any 2-7/8" Stowable Table Post.

Order No. Mfg. No. / Description Price
550270 (3660107) **\$53.98** LQ

Springfield Marine Stowable Table Mount



- Locking groove 2-3/8" table mount.
- High-strength aluminum with anodized finish.
- 7" diameter with 5-3/4" hole pattern.
- Works with any 2-3/8" Stowable or Tapered Thread-Lock Table Posts.

Order No. Mfg. No. / Description Price
550265 (3660018) **\$33.98** LQ

Springfield Marine 2-7/8" Table Mount



- 2-7/8" table mount.
- High-strength aluminum with anodized finish.
- 9" diameter with 8" hole pattern.
- Works with any 2-7/8" Stowable Table Post.

Order No. Mfg. No. / Description Price
550275 (3660207) **\$54.98** LQ

- Fun & Flotation
- Anchor & Dock
- Safety
- Electronics
- Trolling Motors
- Lighting
- Electrical
- Topside Acc.
- Cockpit & Deck
- Instruments
- Steering, Controls
- Perform.
- Fuel System
- Engine & Parts
- Engine Care
- Propellers
- Seating & Pedestals
- Tops & Covers
- Pumps
- Cleaning & Care
- Paint & Paint Acc.
- Hardware, Fasteners
- Trailer
- Misc.
- Comm.